

Flooding in Henderson and Rānui







Making Space for Water

We're proposing four objectives for managing flood risks:



Reduce existing flood risks

Risks in known flood areas are reduced, using a toolbox of flood management techniques.



Avoid creating new flood risks

New development avoids creating flood risks to people, property and infrastructure.



Raise people's awareness of flood risks

Aucklanders understand what flood risks mean for them. They know if they live in a flood hazard area, how to manage stormwater on their property, and what to do before, during and after a flood.



Be prepared for flood events

Reliable data and systems underpin the council's and Aucklanders' storm preparations.





Making space for water in Henderson-Massey

Operations and maintenance

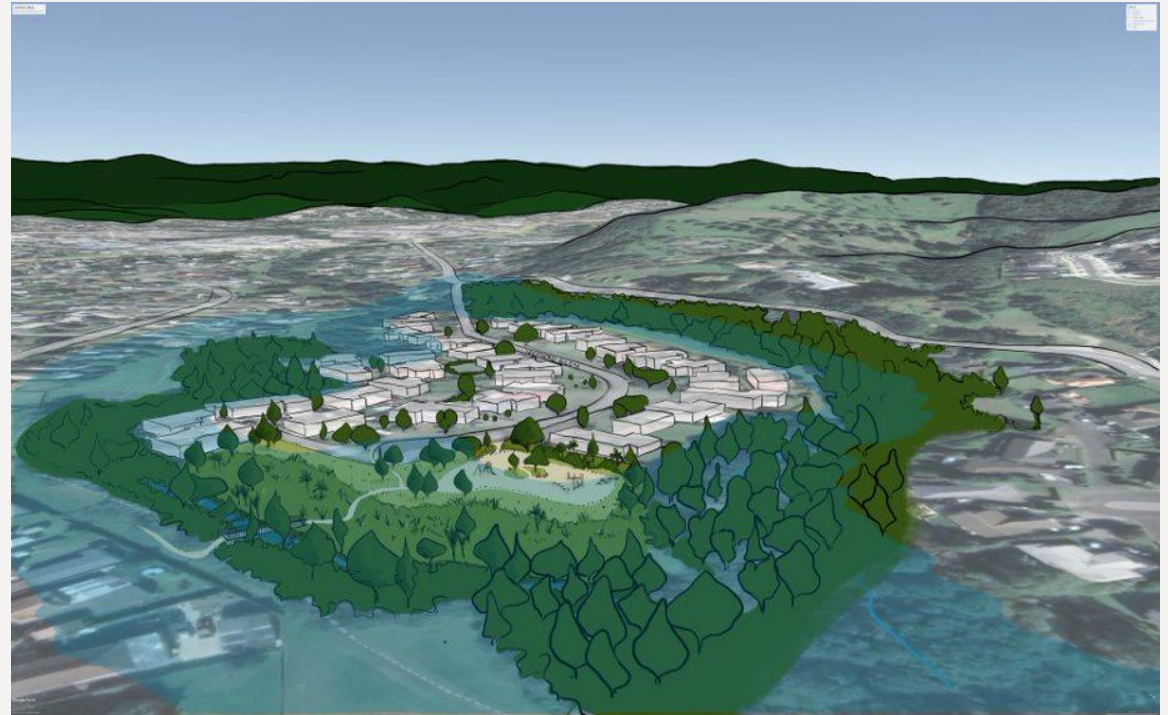
- Increased maintenance
- Flood intelligence

Neighbourhood solutions

- Community led flood resilience
- Stream rehabilitation
- Rural settlements
- Culvert & bridge upgrades
- Blue-green networks

Site specific interventions

- Overland flow path management
- High-risk properties



Waimoko stream blue-green area



Blue-green networks have catchment-wide benefits



Reduce surface flooding and associated damages



Ensure public safety and protect private and public assets



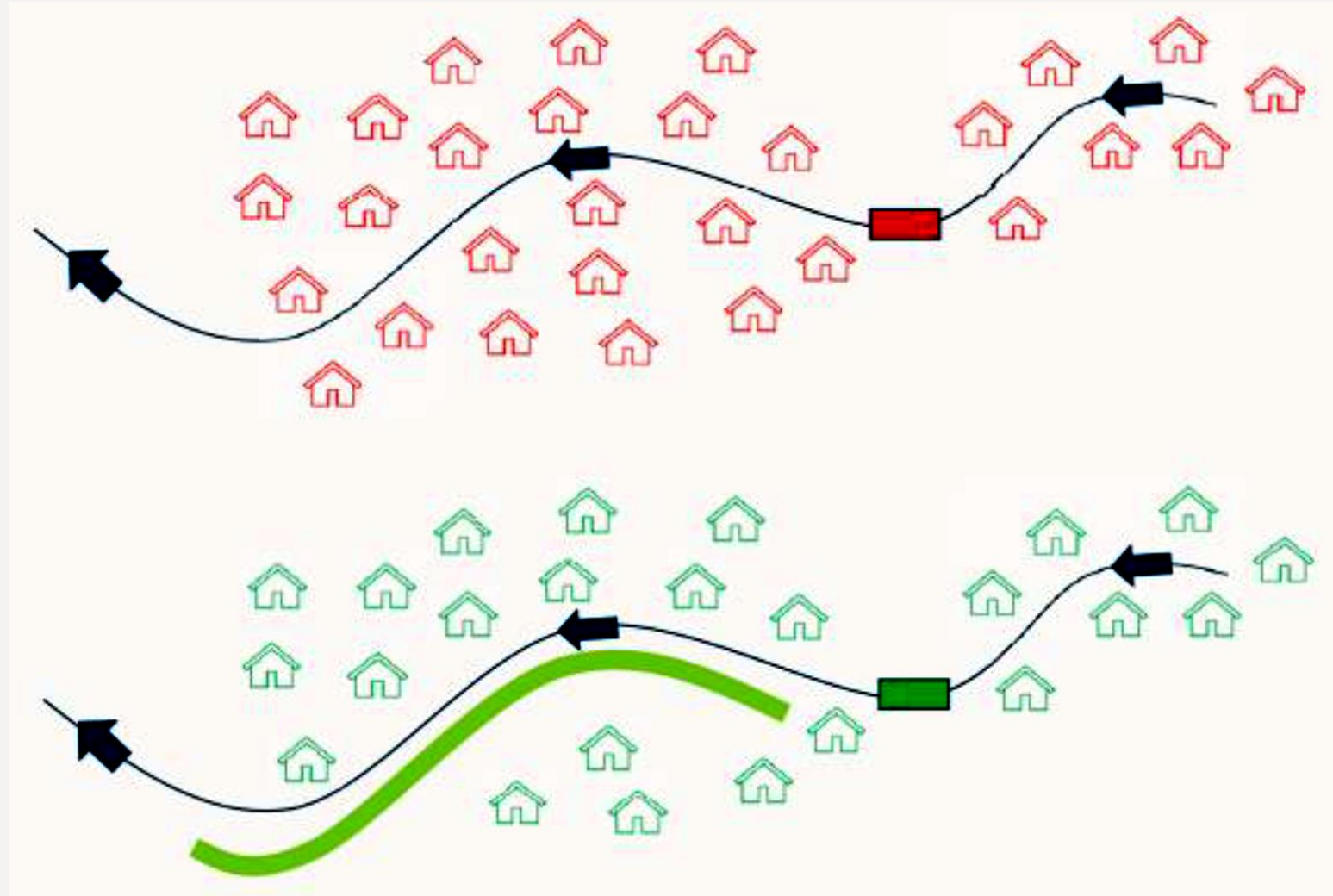
Support development without causing new flood risks



Improve the urban ecosystem, community interactions and wellbeing, amenity values



Improve water quality





Blue-Green Network Projects





Mayfair/Clover/Meadowcroft/LincolnGarden Area
Modelled Floodplain and Reported Houses Flooded on 27th Jan



Legend

- Houses Flooded From January 2023 Event
- AUD_FloodPlains_Draft



Swanson / Waimoko Catchment Area 1 Green Network Potential Areas

Legend

- Houses Flooded From January 2023 Event
- Study_Area
- Green_Network_Potential_Areas

Ecological Extent

- <all other values>

Type

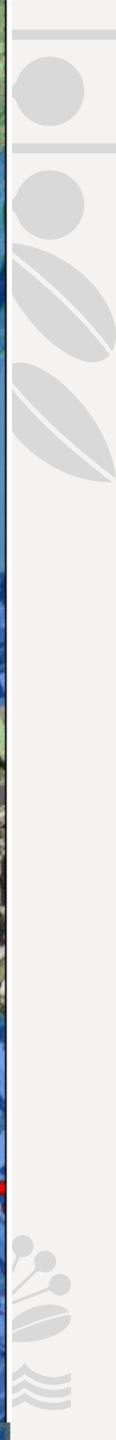
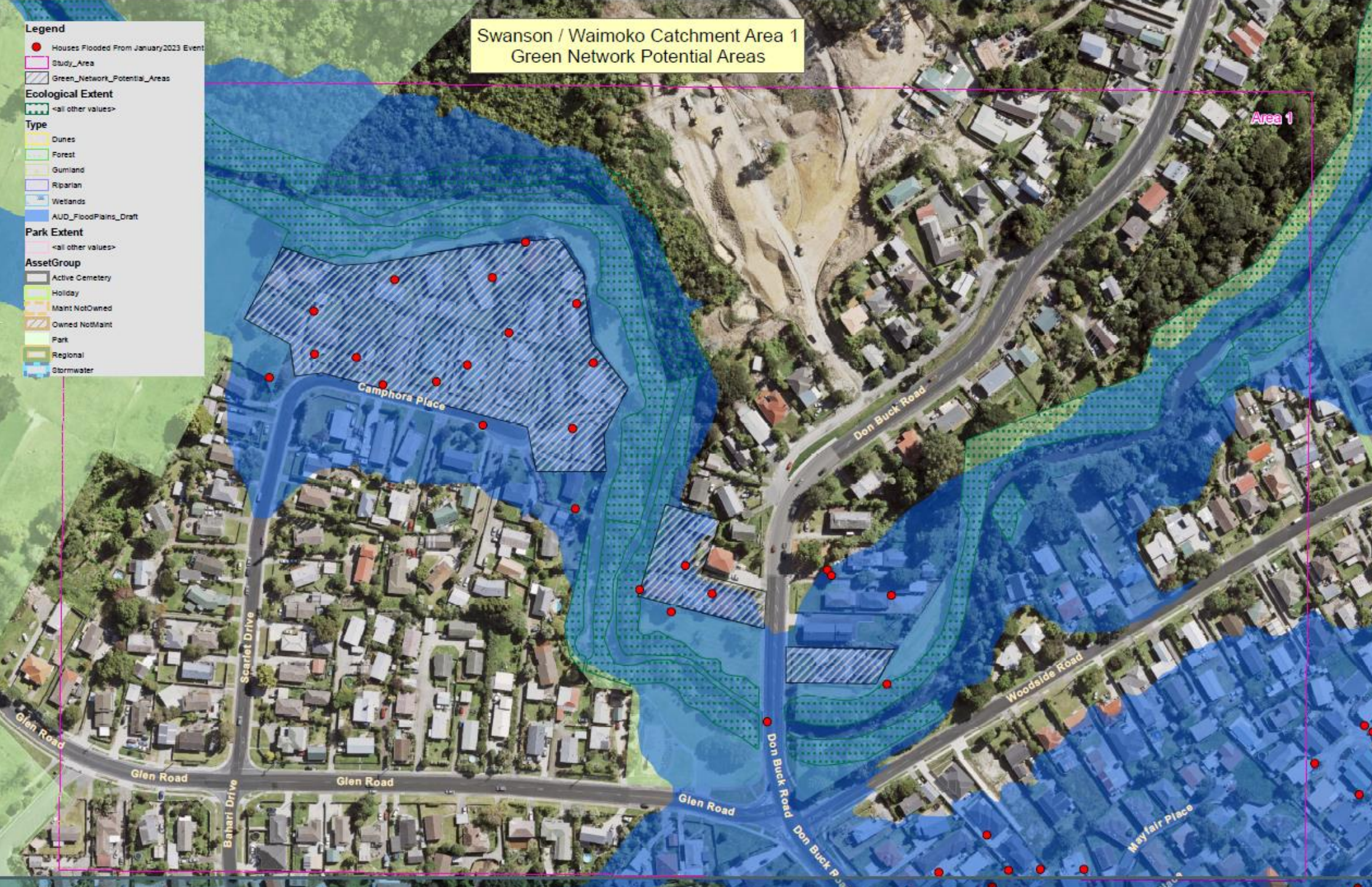
- Dunes
- Forest
- Gumland
- Riparian
- Wetlands
- AUD_FloodPlains_Draft

Park Extent

- <all other values>

AssetGroup

- Active Cemetery
- Holiday
- Maint NotOwned
- Owned NotMaint
- Park
- Regional
- Stormwater



Swanson / Waimoku Catchment Area 2 Green Network Potential Areas

Legend

- Houses Flooded From January 2023 Event
- Study Area
- Green_Network_Potential_Areas

Ecological Extent

- <all other values>

Type

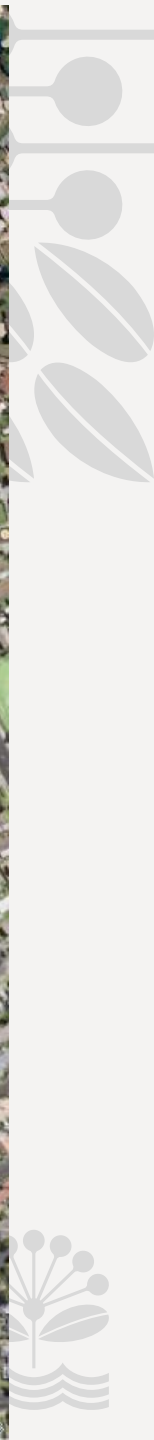
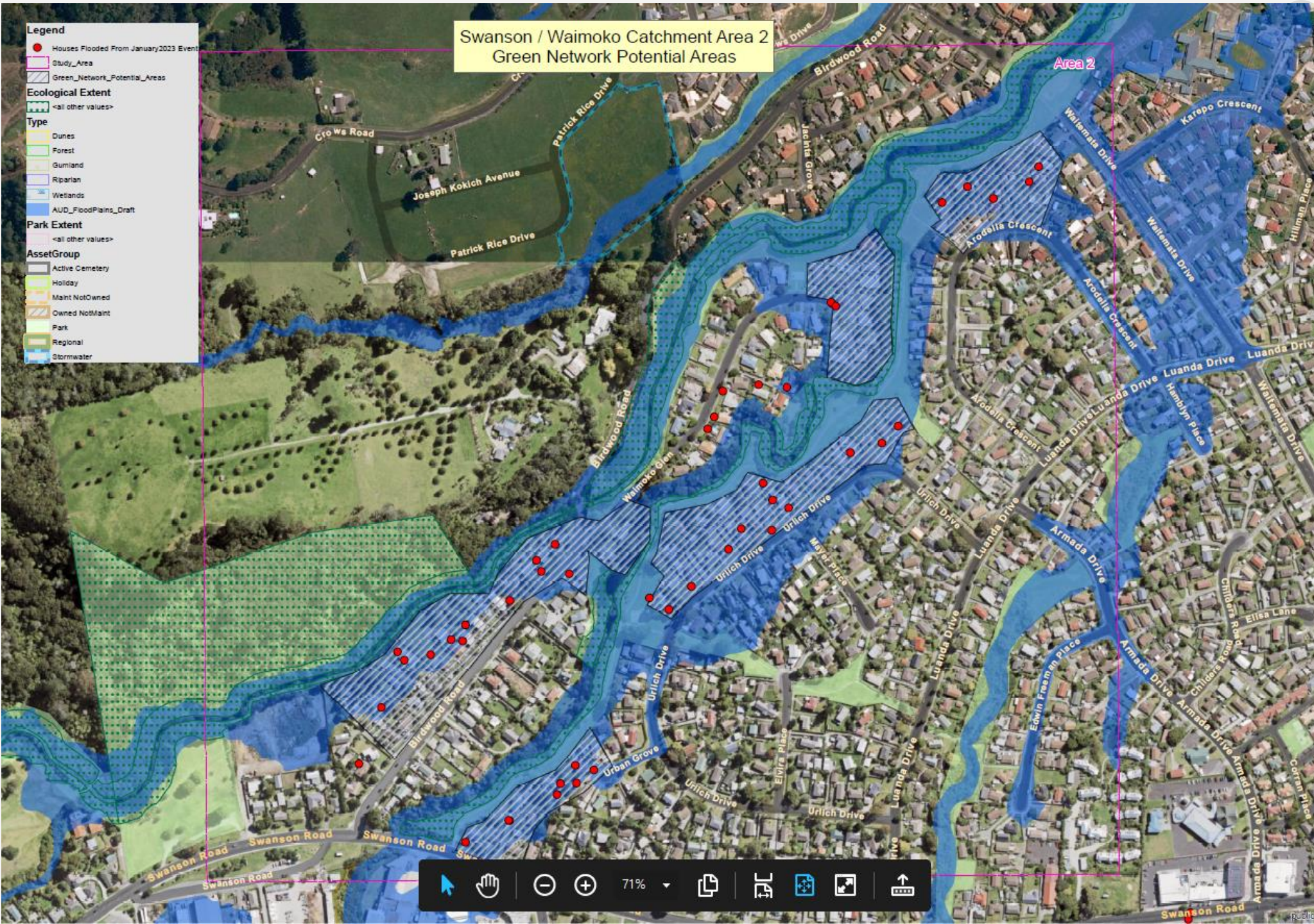
- Dunes
- Forest
- Gumland
- Riparian
- Wetlands
- AUD_FloodPlains_Draft

Park Extent

- <all other values>

AssetGroup

- Active Cemetery
- Holiday
- Maint NotOwned
- Owned NotMaint
- Park
- Regional
- Stormwater



Swanson / Waimoko Catchment Area 3 Green Network Potential Areas

- Legend**
- Houses Flooded From January 2023 Event**
 - Red dot
- Study_Area**
 - Pink dashed line
- Green_Network_Potential_Areas**
 - Blue hatched area
- Ecological_Extent**
 - Green wavy line pattern
 - <all other values>
- Type**
 - Dunes (Yellow)
 - Forest (Light Green)
 - Gumland (Light Yellow)
 - Riparian (Light Blue)
 - Wetlands (Light Blue)
 - AUD_FloodPlains_Draft (Dark Blue)
- Park_Extent**
 - <all other values>
- AssetGroup**
 - Active Cemetery (Grey)
 - Holiday (Light Green)
 - Maint NotOwned (Light Yellow)
 - Owned NotMaint (Light Orange)
 - Park (Light Green)
 - Regional (Light Green)
 - Stormwater (Light Blue)

